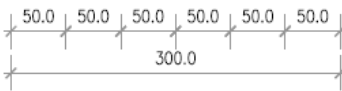
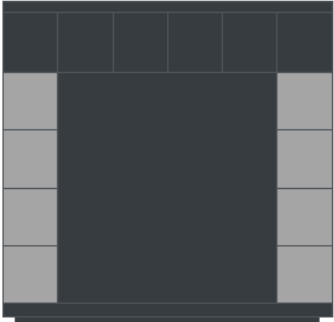


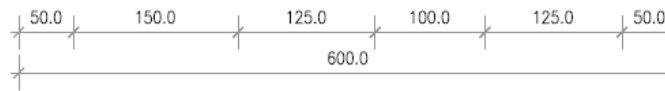
CABIN NR 2

6,0M X 3,0M (18m²)

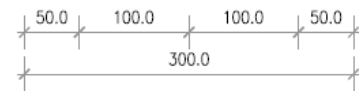
LEFT WALL



FRONT WALL



RIGHT WALL



SPECIFICATION



MEASUREMENTS

Dimensions: 6m (L) x 3m (W) x 3m (H)
Internal Height: 2.6m to 2.5m
Available Sizes: 7m x 3m, 8m x 3m,
9m x 3m, or 20ft to 30ft



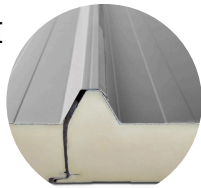
FRAME

Full steel frame system with four eye bolts on the roof, allowing easy movement from A to B.



INTERNAL WALLS FINISH

Smooth white steel sheets with hygienic certification, easy to clean



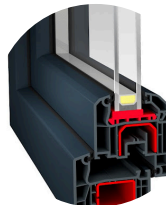
WALLS & ROOF

Made from fully insulated sandwich panels with a polyurethane core.



FLOORING

- Robust construction frame
- Sandwich panel with chipboard
- Commercial lino finish in Earl Grey color



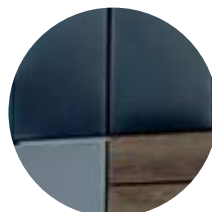
WINDOWS

PVC windows with double-glazed glass; dimensions as per the drawing.



DOOR

Aluminum single or double door in graphite with double-glazed glass.



EXTERNAL CLADDING OPTIONS:

Steel coffers in a specific color or wood imitation structure
Natural wood boards, or composite.



QUALITY

Quality guarantee at every stage of execution.



EXPERIENCE

10 years of market presence.



MOBILITY

Fast and tailored service to meet customer needs.



DEVELOPMENT

Continual pursuit of providing the best solutions.



+44 7551 398823



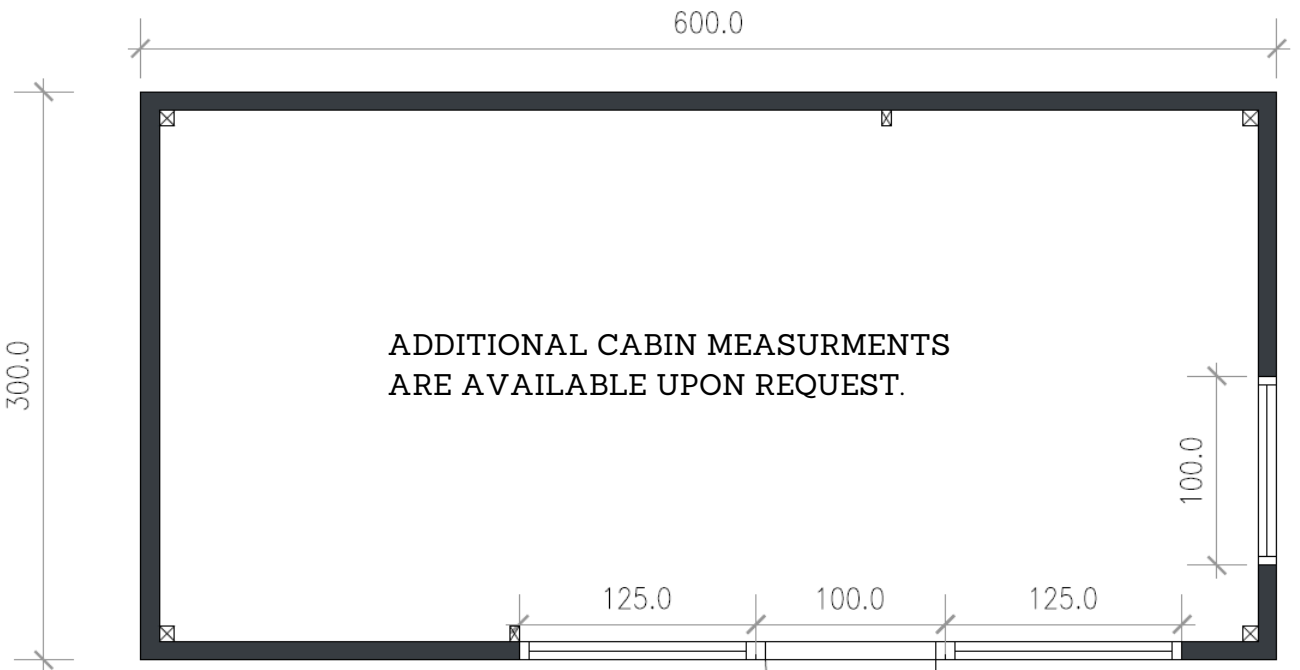
info@mobileunit.eu



www.mobileunit.eu



FLOOR PLAN



+44 7551 398823



info@mobileunit.eu



www.mobileunit.eu



@MobileUnit



@mobileunitltd

ADDITIONAL EXTRAS

WATER HEATER



RADIATOR



AIR CONDITIONER



PARTY WALLS & DOORS



BATHROOM & TOILET



KITCHENETTE



HPL CABINS



OUR CLIENTS



QUALITY

Quality guarantee at every stage of execution.



EXPERIENCE

10 years of market presence.



MOBILITY

Fast and tailored service to meet customer needs.



DEVELOPMENT

Continual pursuit of providing the best solutions.