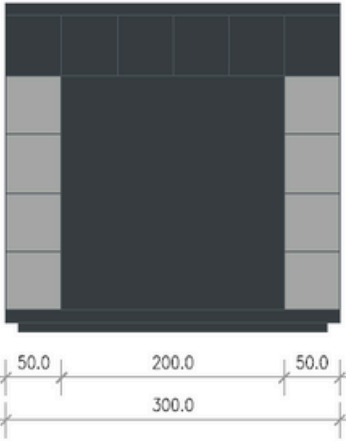


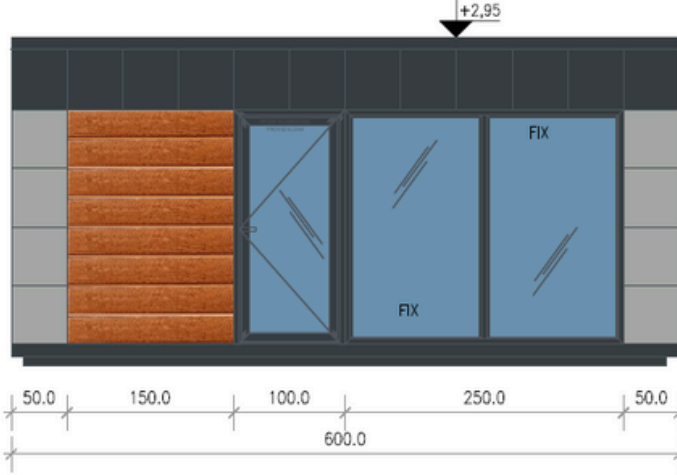
## PORTABLE OFFICE - GARDEN - JAY

6,0M X 3,0M (18m<sup>2</sup>)

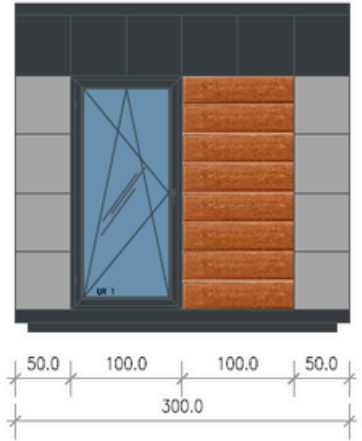
LEFT WALL



FRONT WALL



RIGHT WALL

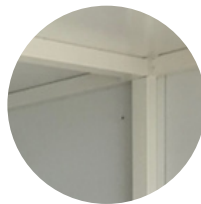


## SPECIFICATION



### MEASUREMENTS

Dimensions: 6m (L) x 3m (W) x 3m (H)  
Internal Height: 2.6m to 2.5m  
Available Sizes: 7m x 3m, 8m x 3m,



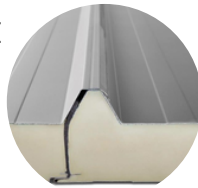
### FRAME

Full steel frame system with four eye bolts on the roof, allowing easy movement from A to B.



### INTERNAL WALLS FINISH

Smooth white steel sheets with hygienic certification, easy to clean



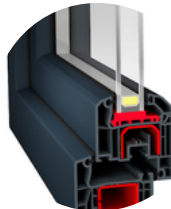
### WALLS & ROOF

Made from fully insulated sandwich panels with a polyurethane core.



### FLOORING

- Robust construction frame
- Sandwich panel with chipboard
- Commercial lino finish in Earl Grey color



### WINDOWS

PVC windows with double-glazed glass; dimensions as per the drawing.



### DOOR

Aluminum single or double door in graphite with double-glazed glass.



### EXTERNAL CLADDING OPTIONS:

Steel coffering in a specific color.



### QUALITY

Quality guarantee at every stage of execution.



### EXPERIENCE

10 years of market presence.



### MOBILITY

Fast and tailored service to meet customer needs.



### DEVELOPMENT

Continual pursuit of providing the best solutions.



+44 7551 398823



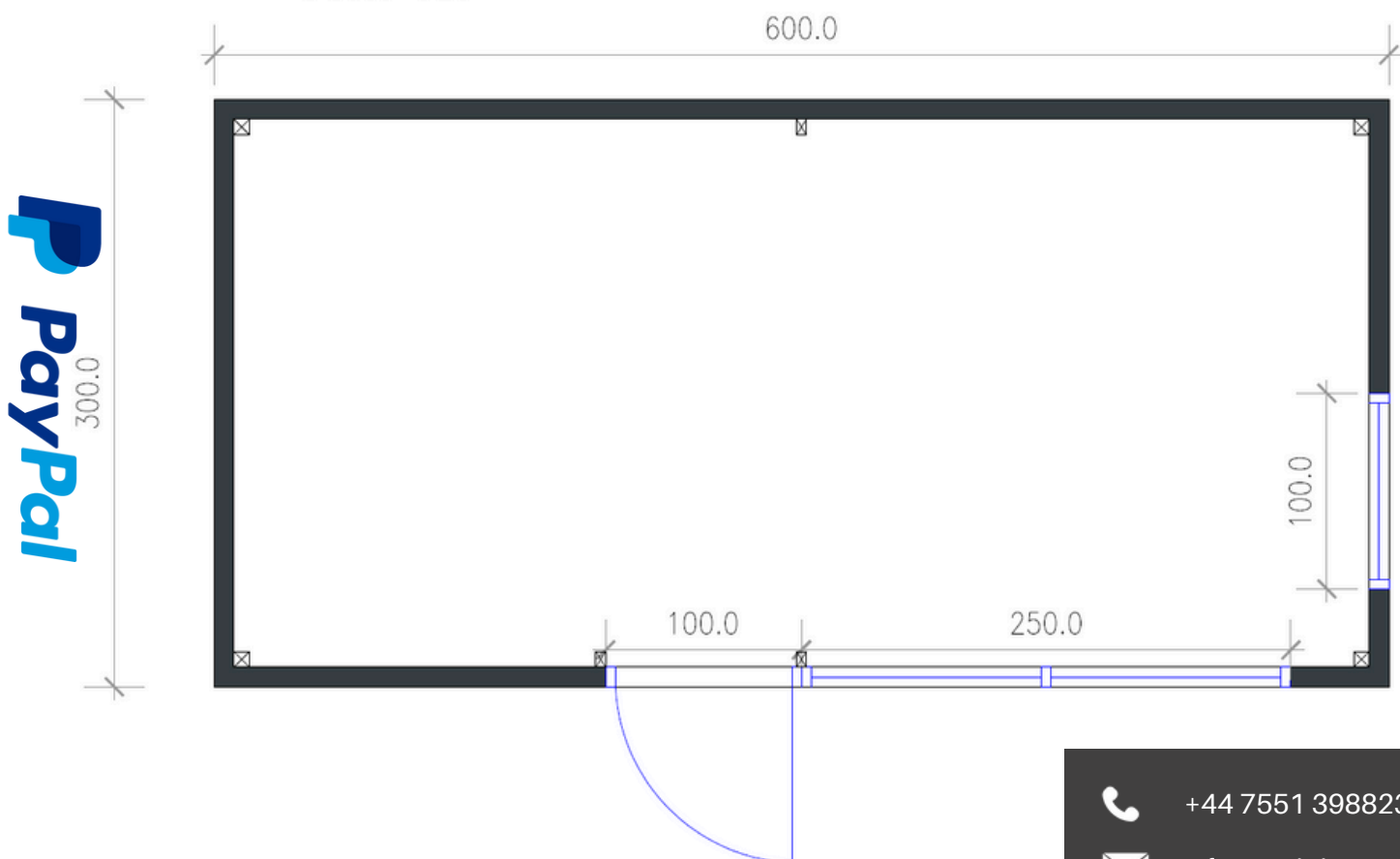
info@mobileunit.eu



www.mobileunit.eu



**FLOOR PLAN**



+44 7551 398823  
info@mobileunit.eu  
www.mobileunit.eu

# ADDITIONALS

WATER HEATER



RADIATOR



AIR CONDITIONER



PARTY WALLS & DOORS



BATHROOMS



KITCHENETTE



HPL CABINS



# OUR CLIENTS



**QUALITY**

Quality guarantee at every stage of execution.



**EXPERIENCE**

10 years of market presence.



**MOBILITY**

Fast and tailored service to meet customer needs.



**DEVELOPMENT**

Continual pursuit of providing the best solutions.