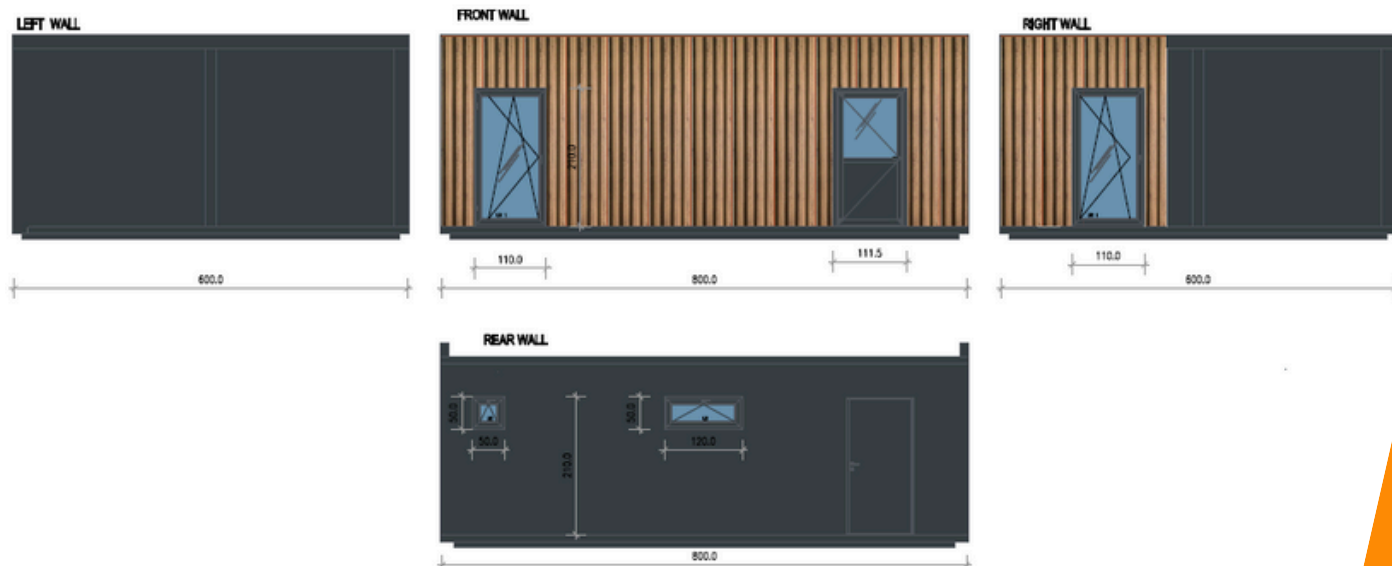


## PORTABLE OFFICE - MODULAR BUILDING LIAM

8 M X 6 M (48 m<sup>2</sup>)



### SPECIFICATION

#### MEASUREMENTS

Exterior Dimensions: 8m x 6m  
Height: 2.7m; sloping down to 2.5m

#### CONSTRUCTION

Cage frame made of closed steel profiles. The structure is partially visible inside the pavilion.  
Transport handles on the roof.

#### INTERN WALLS

PIR sandwich panel with a thickness of 10cm. On the interior side finished with a smooth metal sheet in white; on the exterior side finished with a metal sheet in color 7016.

#### ROOF

PIR sandwich panel with a thickness of 10cm. Interior side finished with a smooth metal sheet in white; exterior side finished with a metal sheet in color 7016.

#### FLOOR

Layered floor construction consisting of:

- frame,
- sandwich panel with a polyurethane core, 10cm thick,
- OSB board, 15mm,
- sinteros vinyl flooring, collection: TARKET ACTIVIA, EARL GREY.

#### WINDOWS

PVC with double-glazed unit, dimensions according to the drawing.

#### DOOR

Exterior: aluminum, glazed with double-glazed unit in color 7016.

#### SHEET METAL FINISHING

Complete set of flashing in color 7016.  
Steel slat wall cladding as per the reference photo, made of metal imitating wood.



#### QUALITY

Quality guarantee at every stage of execution.



#### EXPERIENCE

10 years of market presence.



#### MOBILITY

Fast and tailored service to meet customer needs.



#### DEVELOPMENT

Continual pursuit of providing the best solutions.



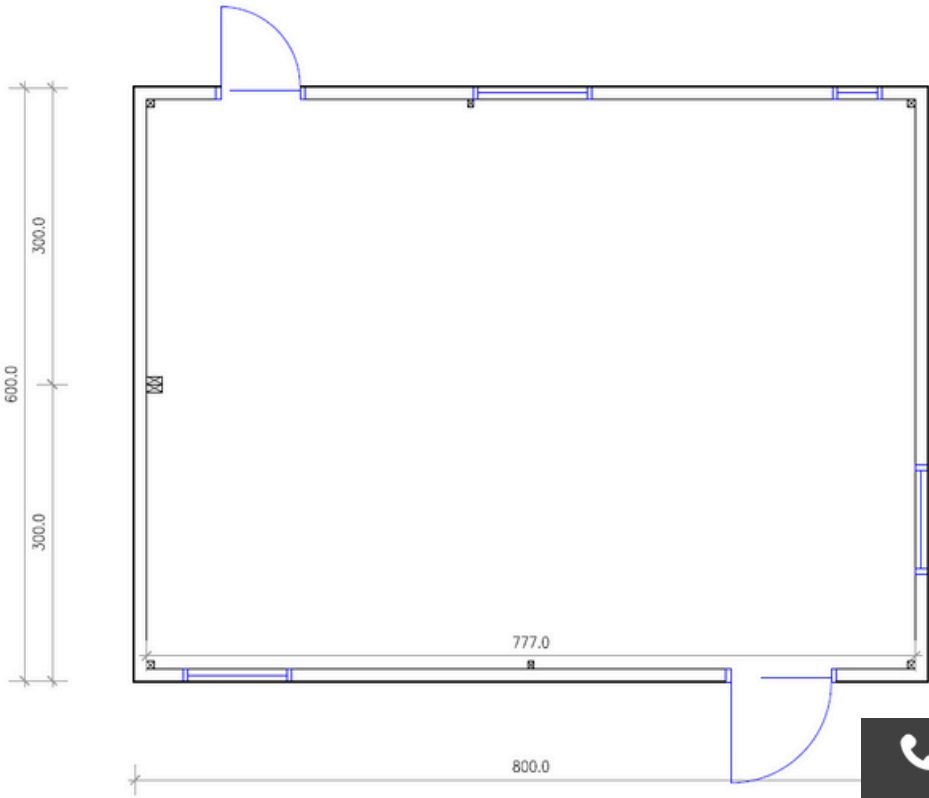
+44 7551 398823



info@mobileunit.eu



www.mobileunit.eu



# ADDITIONALS

WATER HEATER



RADIATOR



AIR CONDITIONER



INTERNAL DOORS



BATHROOMS



KITCHENETTE



HPL CABINS



# OUR CLIENTS



**QUALITY**

Quality guarantee at every stage of execution.



**EXPERIENCE**

10 years of market presence.



**MOBILITY**

Fast and tailored service to meet customer needs.



**DEVELOPMENT**

Continual pursuit of providing the best solutions.