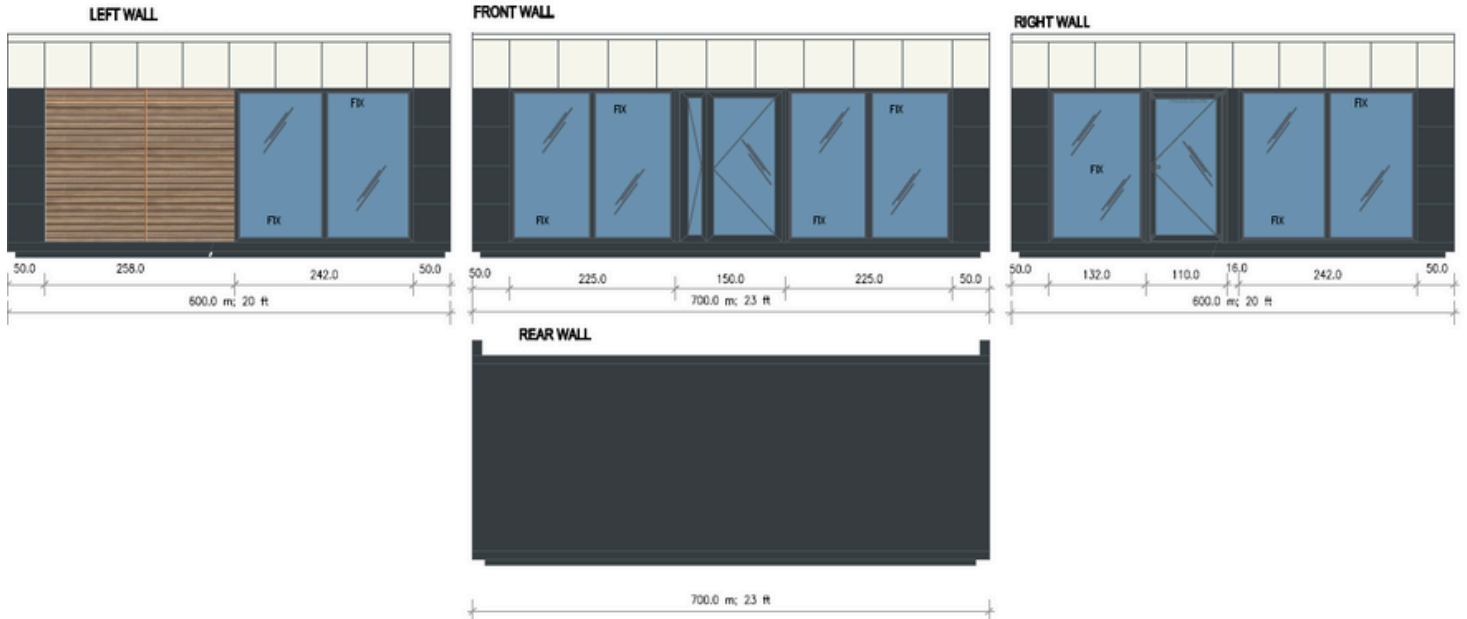


PORTABLE OFFICE - MODULAR BUILDING - STIHL

7,0M X 6,0M (54SQM)/ 23ft X 20 ft (460 ft²)



SPECIFICATION



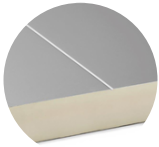
MEASUREMENTS

Exterior Dimensions: 7m x 6 m
23ft x 20 ft
Height: 2.7m; sloping down to 2.5m
(8,86 ft x 8.20 ft)



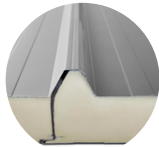
CONSTRUCTION

Cage frame made of closed steel profiles. The structure is partially visible inside the pavilion.
Transport handles on the roof.



INTERN WALLS

PIR sandwich panel with a thickness of 10cm. On the interior side finished with a smooth metal sheet in white; on the exterior side finished with a metal sheet in color 7016.



ROOF

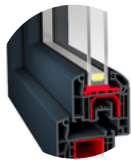
PIR sandwich panel with a thickness of 10cm. Interior side finished with a smooth metal sheet in white; exterior side finished with a metal sheet in color 7016.



FLOOR

Layered floor construction consisting of:

- frame,
- sandwich panel with a polyurethane core, 10cm thick,
- OSB board, 15mm,
- sinteros vinyl flooring, collection: TARKET ACTIVIA, EARL GREY.



WINDOWS

PVC with double-glazed unit, dimensions according to the drawing.



DOOR

Exterior: aluminum, glazed with double-glazed unit in color 7016.



SHEET METAL FINISHING

Complete set of flashing in color 7016.
Panel as per the reference photo, made of 0.6mm thick metal in color RAL 7016 and color 9010, combined with a soffit made of wood.



QUALITY

Quality guarantee at every stage of execution.



EXPERIENCE

10 years of market presence.



MOBILITY

Fast and tailored service to meet customer needs.



DEVELOPMENT

Continual pursuit of providing the best solutions.



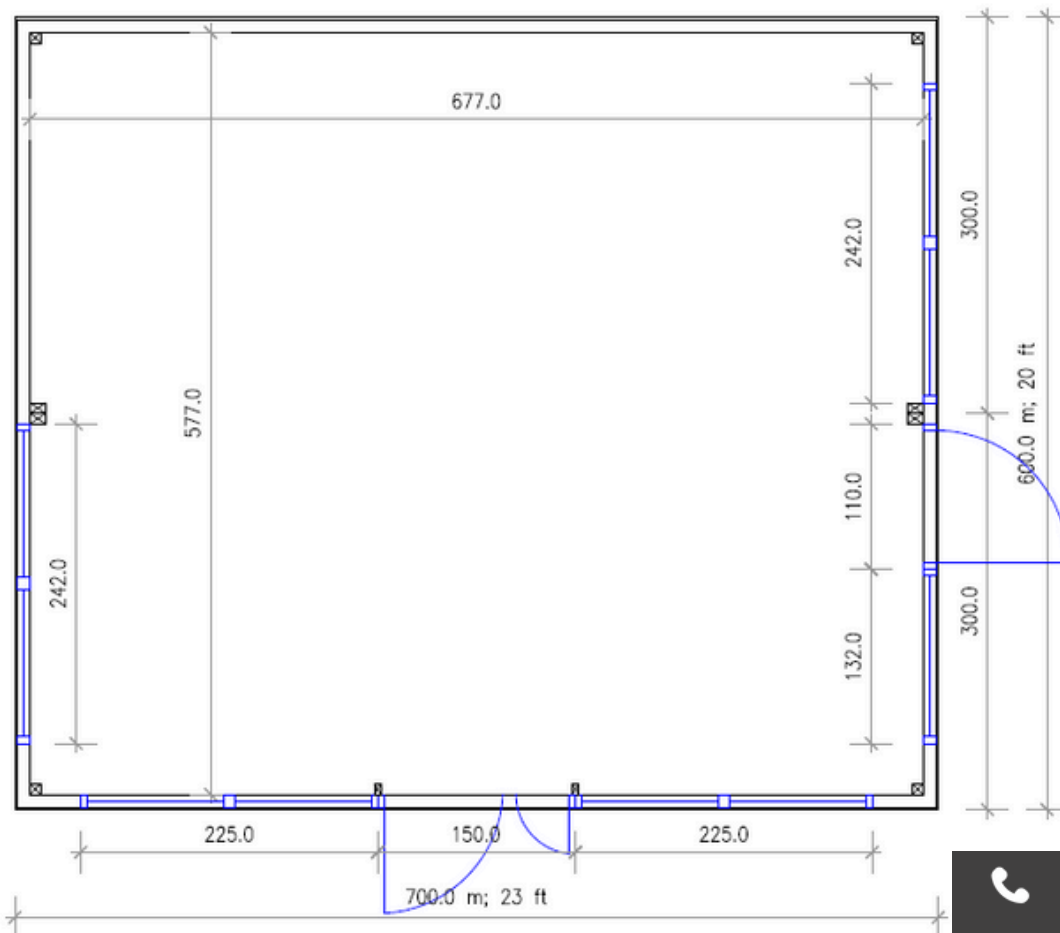
+44 7551 398823



info@mobileunit.eu



www.mobileunit.eu



PayPal



+44 7551 398823



info@mobileunit.eu



www.mobileunit.eu



@MobileUnit



@mobileunitltd

ADDITIONALS

WATER HEATER



RADIATOR



AIR CONDITIONER



INTERNAL DOORS



BATHROOMS



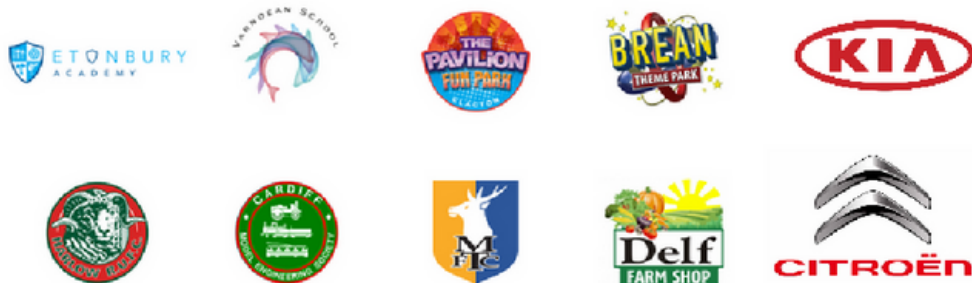
KITCHENETTE



HPL CABINS



OUR CLIENTS



QUALITY

Quality guarantee at every stage of execution.



EXPERIENCE

10 years of market presence.



MOBILITY

Fast and tailored service to meet customer needs.



DEVELOPMENT

Continual pursuit of providing the best solutions.

+44 7551 398823

info@mobileunit.eu

www.mobileunit.eu