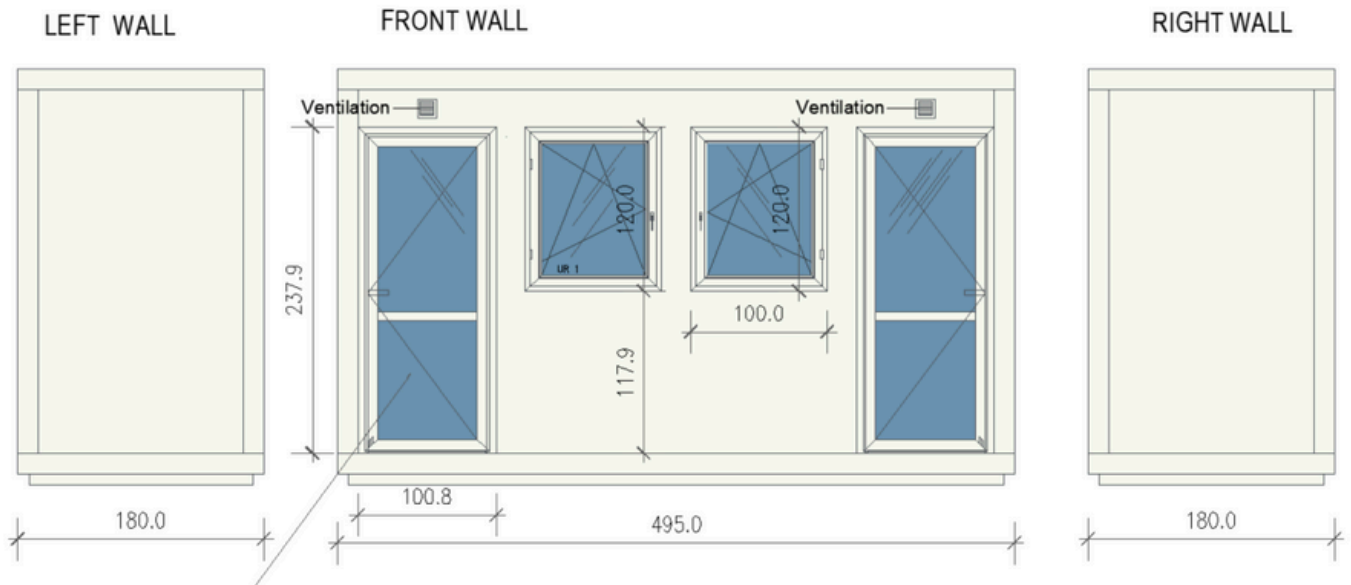


## PORTABLE OFFICE - CABIN - MODULAR BUILDING "POPPY" 4,95M X 1,8M (8,91SQM)/16,2ft x 5,9 ft (95,58ft<sup>2</sup>)



### SPECIFICATION

#### MEASUREMENTS

Dimensions: 4,95mx1,8 m/16,2ft x5,9 ft  
Internal Height: 2.7 m  
Available Sizes:  
6m x 3m/ 20ft x 10ft  
7m x 3m/ 23ft x 10 ft  
8m x 3m/ 23ft x 10ft



#### FRAME

Full steel frame system with four eye bolts on the roof, allowing easy movement from A to B.

#### INTERNAL WALLS FINISH

Smooth white steel sheets with hygienic certification, easy to clean



#### WALLS & ROOF

Made from fully insulated sandwich panels with a polyurethane core.

#### FLOORING

- Robust construction frame
- Sandwich panel with chipboard
- Commercial lino finish in Earl Grey color

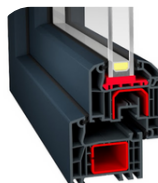


#### EXTERNAL CLADDING OPTIONS:

Steel coffers in a specific color .

#### DOOR

Aluminum single in white with double-glazed glass.



#### WINDOWS

PVC windows with double-glazed glass; dimensions as per the drawing.



#### QUALITY

Quality guarantee at every stage of execution.



#### EXPERIENCE

10 years of market presence.



#### MOBILITY

Fast and tailored service to meet customer needs.



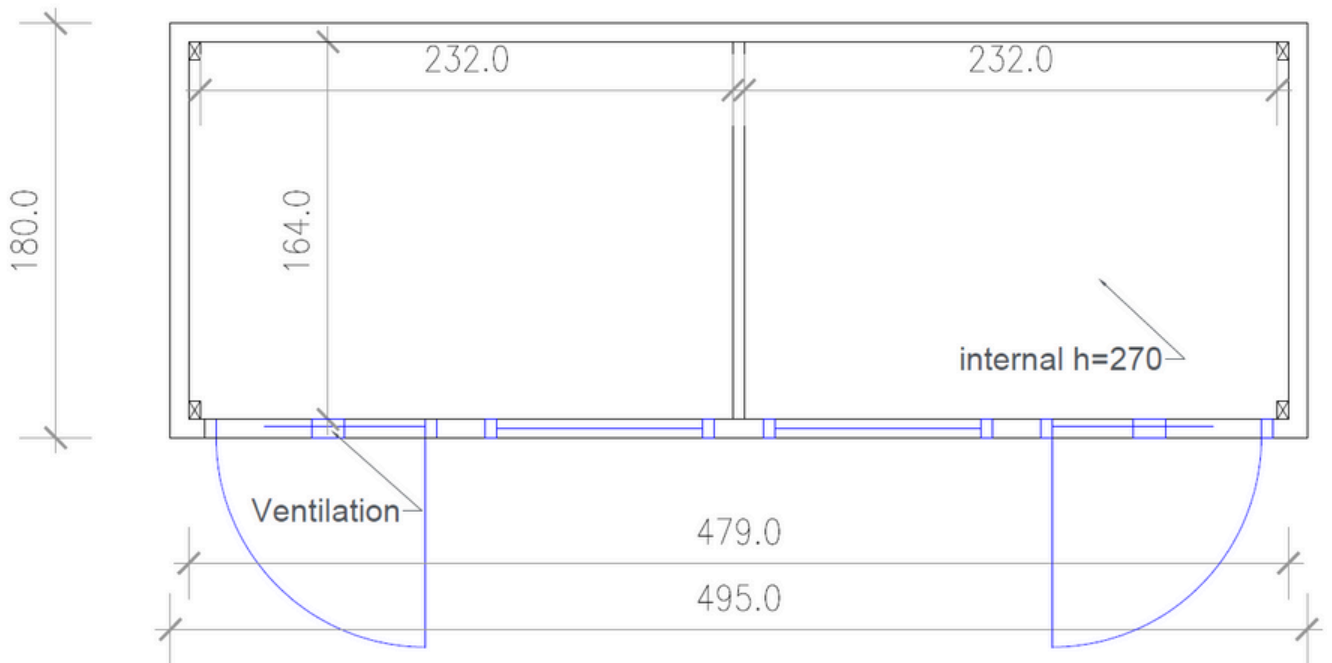
#### DEVELOPMENT

Continual pursuit of providing the best solutions.

+44 751 398823

info@mobileunit.eu

www.mobileunit.eu



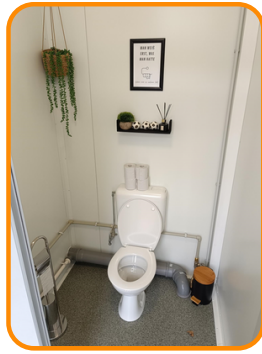
**PayPal**

+44 7551 398823  
info@mobileunit.eu  
www.mobileunit.eu

# ADDITIONALS



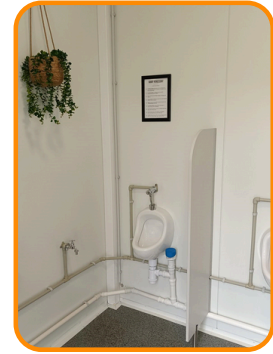
PARTY WALLS & DOORS



BATHROOMS



ELECTRICAL INSTALLATIONS



WATER AND SEWAGE INSTALLATIONS



KITCHENETTE



HPL CABINS



RADIATOR



AIR CONDITIONER

# OUR CLIENTS



**QUALITY**

Quality guarantee at every stage of execution.



**EXPERIENCE**

10 years of market presence.



**MOBILITY**

Fast and tailored service to meet customer needs.



**DEVELOPMENT**

Continual pursuit of providing the best solutions.