



PRODUCT ———
CATALOGUE

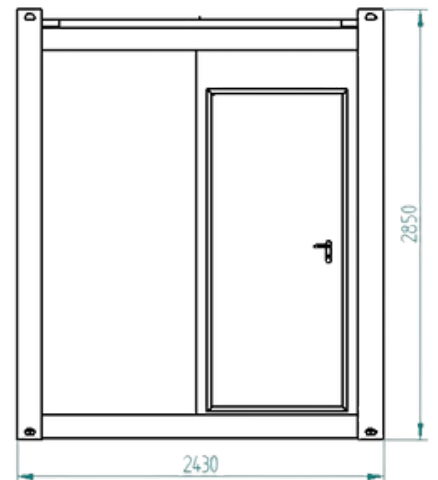




Table of contents

<u>About us</u>	<u>2 - 3</u>
<u>Our offer</u>	<u>4 - 5</u>
<u>Office, Construction, Sanitary, Social, Gatehouse, and Security containers</u>	<u>6 - 7</u>
<u>Technical specifications</u>	<u>8 - 16</u>
<u>Gallery</u>	<u>17 - 29</u>



MM MOBILE UNIT LTD

Acess RD, Common Ln, Retford,
DN22 8LW, UK

Phone: +44 7551 398823

Email: info@mobileunit.eu

 Company Number: 11154002



ABOUT US

For years, MOBILE UNITS LTD has been delivering containers precisely tailored to our customers' needs. We create facilities that ensure optimal year-round performance. Our projects are crafted based on individual client requirements, and we also offer a selection of proven, ready-made solutions. We design new structures with the specific purpose in mind, ensuring they fulfill their intended function.

Experience that opens doors to new possibilities

With many years of industry experience, we can meet the ever-growing expectations of our clients, constructing even the most unconventional buildings in challenging, crowded locations. For us, nothing is impossible.

For us, nothing is impossible.



We can create any modular building, even the most unique ones!

We develop projects based on client-provided documentation or create them in close collaboration with the investor.

Open to your needs

Have a question? Want to buy or rent a modular building? Need a quote?
Contact us, and we will advise you, providing the best solution for your needs.

Our offer

Office / Construction Containers 6,04 x 2,43 m



Sanitary / Social Containers 6,04 x 2,43 m



Container Sets 6,04 x 4,86 m



Office / Gatehouse / Security Containers 3,20 x 2,43 m



Sanitary Containers 3,20 x 2,43 m





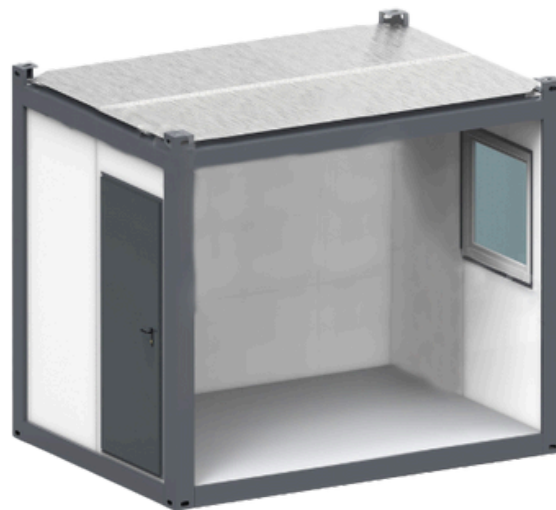
Office containers

Office Containers 6,04 x 2,43 m



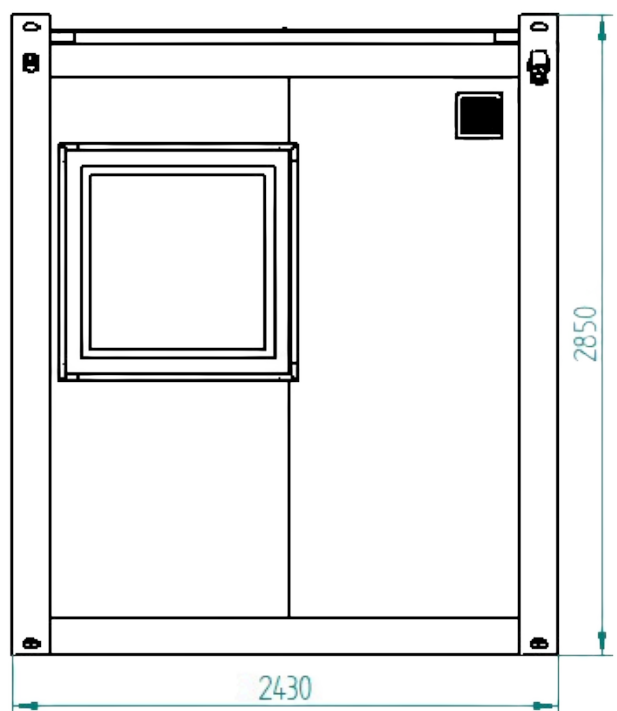
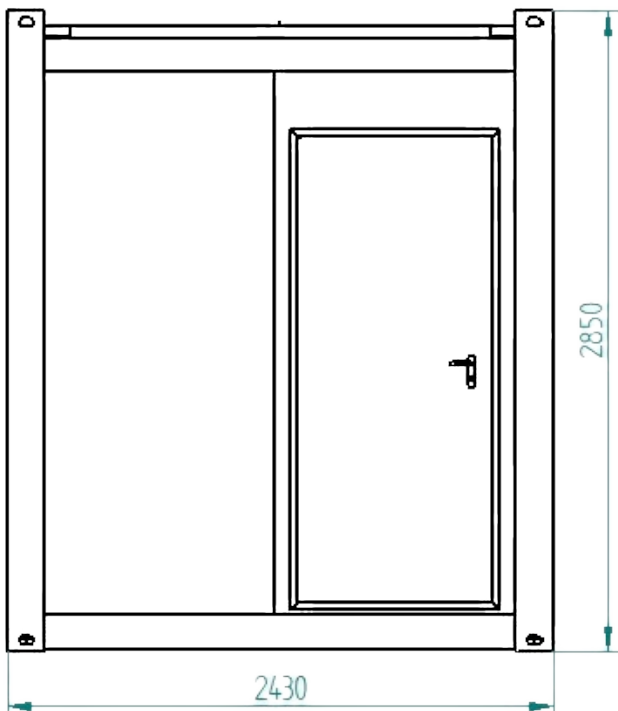


Office containers 3,20 x 2,43 m





Technical specifications





FRAME CONSTRUCTION

Frame dimensions: 6.04 x 2.43 x 2.85 meters

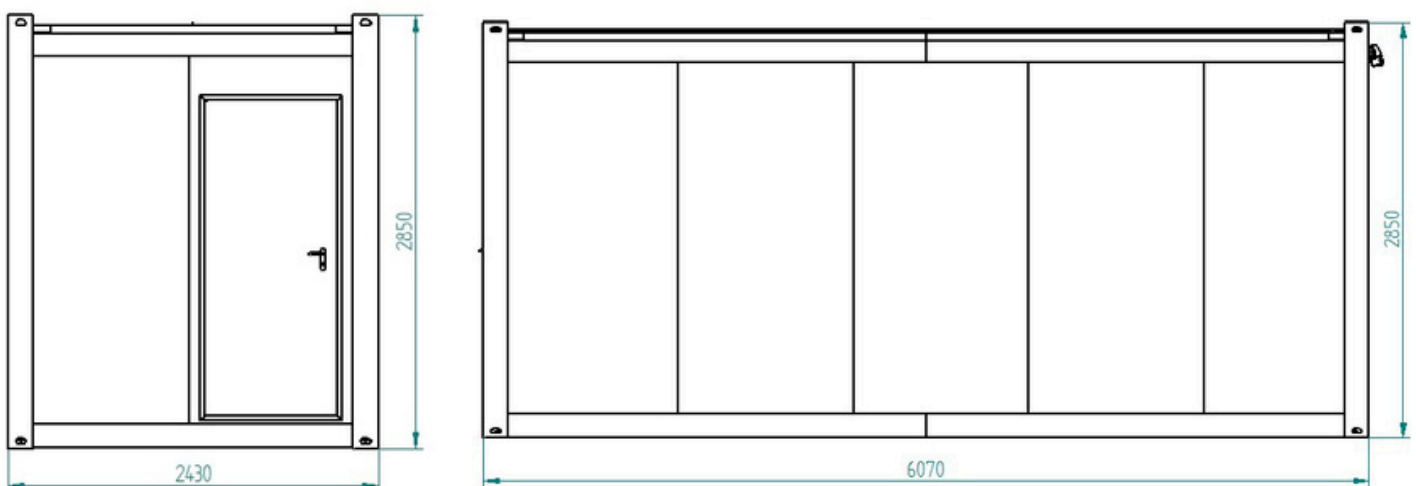
Internal dimensions: 5.75 x 2.15 x 2.50 meters

The container frame is constructed using 4 mm thick steel structures.

The corner posts are rigidly welded to the floor and roof.

The structure includes essential fittings for HDS transport.

The entire frame is coated with primer and finished with high-quality polyurethane paint in RAL 7016 color.





WALL CONSTRUCTION

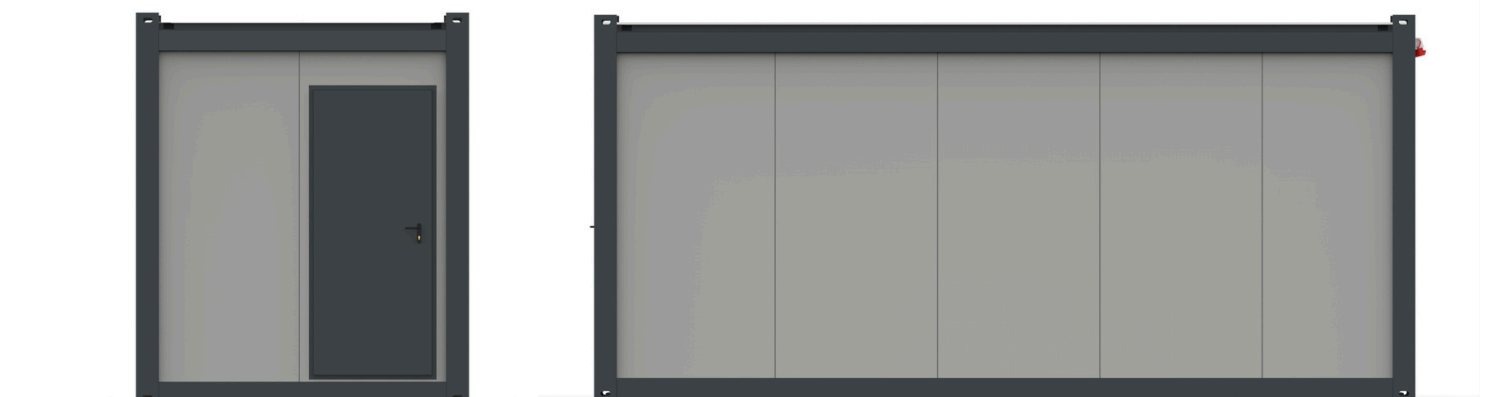
The container walls are made of sandwich panels with a core of rigid 100 mm thick styrofoam.

The steel frame is enclosed by this construction.

The external facade (sandwich panel) features 0.5 mm low-profile trapezoidal steel sheet in silver or graphite per our standard.

The internal facade (sandwich panel) features 0.5 mm low-profile steel sheet in RAL 9010, ensuring optimal thermal and acoustic insulation.

Finishing strips are made of 0.5 mm steel in RAL 9010.





FLOOR

The floor is constructed using a series of angle bars, rigidly welded together.

Insulated with 100 mm mineral wool over the entire surface.

The base is sealed with 1 mm thick galvanized steel sheeting.

The floor base is made of 22 mm Durelis P5 OSB board.

The floor covering is 2.5 mm thick wear-resistant vinyl.

Baseboards are finished in RAL 9010.





ROOF

The roof consists of 4 mm thick steel profiles.

Corner reinforcements are made from 4 mm thick steel sheet.

The roof structure includes sandwich panels with a 100 mm styrofoam core, double-laminated with 0.5 mm sheet steel.

Roofing work is finished with 0.5 mm thick steel.

Sealing is ensured by 0.5 mm galvanized steel sheeting.

All finishing elements are made of 0.5 mm coated steel in RAL 9010.





WINDOWS AND DOORS

Standard equipment:

Tilt-and-turn window, RAL 7016, dimensions: 100 x 100 cm.

Exterior steel door, solid, RAL 7016, dimensions: 200/80 cm.

*Other window sizes available upon request.



ELECTRICAL SYSTEM

Electrical connection: 5x32A, 380V.

Surface-mounted distribution box with 12 modules.

Residual-current circuit breaker and overcurrent protection.

40W LED lighting.

Double hermetic sockets, IP54.

AIR CONDITIONING SYSTEM

2.6 kW air conditioner with heating function, KAISAI eco KEX-09KTGO/KEX-09KTGI.

*Additional cost: + PLN 3,500 net.





Sanitary
containers







An excellent alternative to traditional construction!

The ideal solution for small, medium, and large businesses looking for an economical and functional alternative to traditional construction methods.





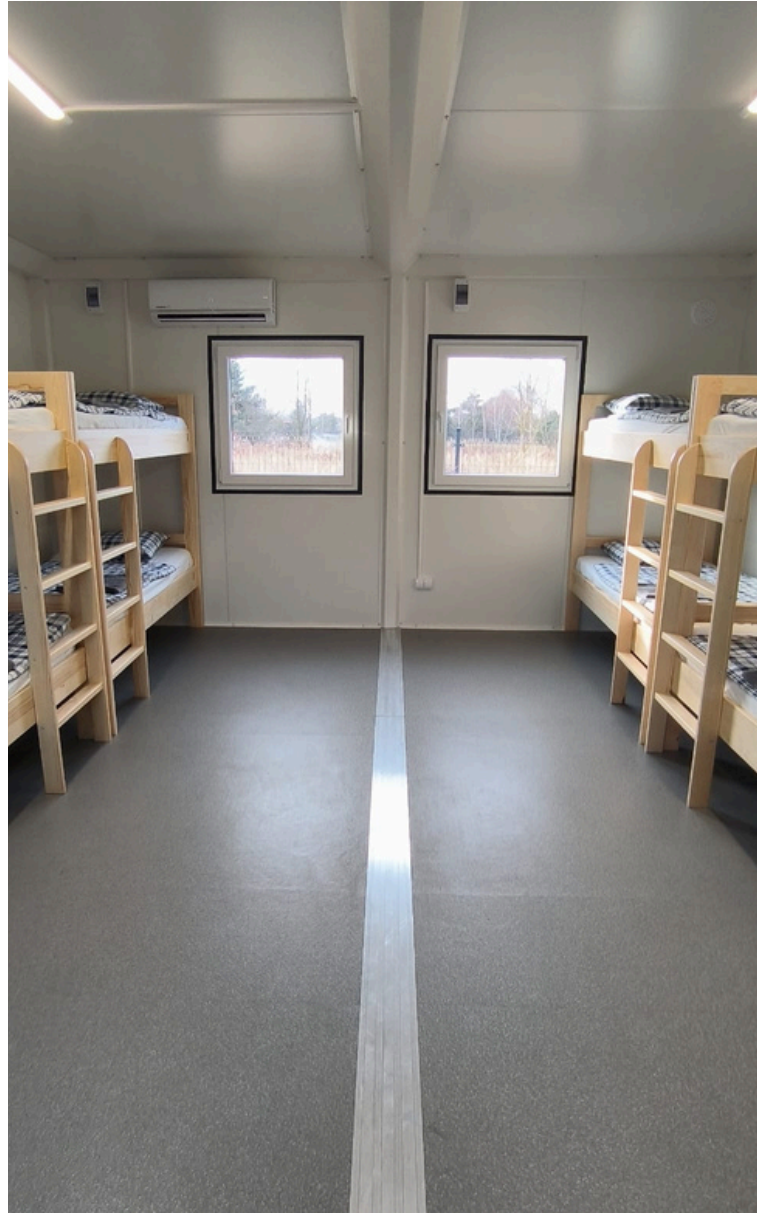


Storage
containers



















Scan the code and find us!



www.mobileunit.eu



+44 7551 398823



Acess RD, Common Ln, Retford,
DN22 8LW, UK



info@mobileunit.eu