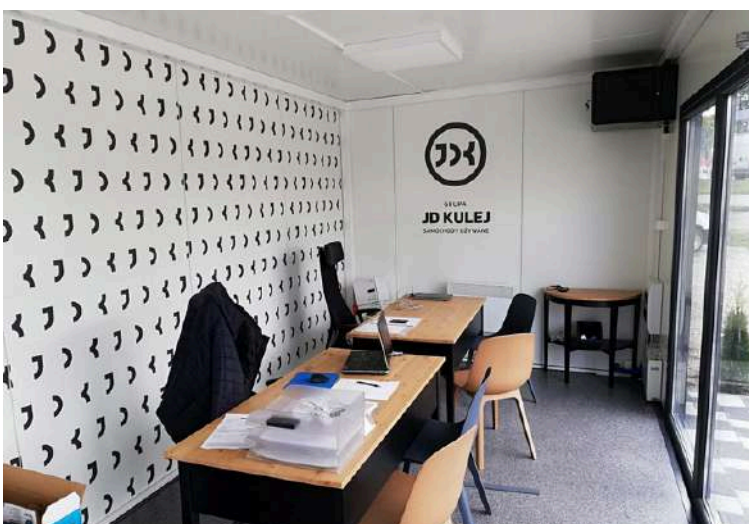



MOBILE UNITS LTD

Innovation solutions for Your business



MODULAR BUILDINGS



 We're a family-owned producer specialising in modular buildings, kiosks and cabins. Combining decades of expertise with cutting-edge technology, we deliver high-quality, durable solutions tailored to your needs.

✨ Portable Modular Buildings & Cabins ✨

🚀 Scalable Turnkey Solutions

Choose from bespoke 2+ module configurations or our ready-made models. We handle design, delivery and on-site assembly—an ergonomic, rapid solution engineered to accelerate your business growth.

❄️ Year-Round Comfort & Efficiency

- Durable sandwich panels with a polyurethane core for superior thermal insulation.
- Keeps interiors cool in summer and warm in winter—maximising comfort and reducing energy costs.

🏗️ Robust, Relocatable Construction

- Heavy-duty cube steel frame with four roof eye-bolts for effortless relocation.
- Delivered fully pre-assembled—just position, connect utilities and start operating.

🎨 Custom Exterior Finishes

- Steel cladding in any RAL colour to reinforce your brand identity.
- Composite panels with wood-effect or genuine timber boards for a premium look.

🔧 Tailored Interior Fit-Outs

- Multiple glazing options for natural daylight and inspiring views.
- Optional turnkey extras: toilet/wet room, kitchenette, air-conditioning units, full electrical installation.

✅ Certified Safety & Quality

- Engineered to CE standards for structural integrity and user safety.
- Built by industry-leading specialists with rigorous QA processes.

Visit our showroom



**Acess RD,
Common Ln,
Retford, DN22 8LW, UK**

**Scan the code
and find us!**



Ready to Elevate Your Space?
Call us now on +44 755 139 8823

 @MobileUnit

 @mobileunitltd

“MCHICKEN”

9m x 8m (72SQM)/29,5ft x 26ft (767ft2)



+44 7551 398823



info@mobileunit.eu



www.mobileunit.eu

“ECO”

12m X 6m (72SQM)/40ft x 20ft (800ft²)



+44 7551 398823



info@mobileunit.eu



www.mobileunit.eu

"EVE"

21m X 6m (126SQM)/69ft x 20ft (1380ft²)



+44 7551 398823



info@mobileunit.eu



www.mobileunit.eu

“STIHL”
7M X 6M (42SQM)/
23ft x 20ft (460ft²)



+44 7551 398823



info@mobileunit.eu



www.mobileunit.eu



EXPLORE OUR WIDE RANGE OF MODULAR BUILDING AVAILABLE
FOR SALE TO ENHANCE YOUR BUSINESS

“LIAM”

8m X 6m (48SQM)/26ft x 20ft (520ft²)



+44 7551 398823



info@mobileunit.eu



www.mobileunit.eu

EXPLORE OUR WIDE RANGE OF PORTABLE CABINS AVAILABLE
FOR SALE TO ENHANCE YOUR BUSINESS

"GALEON"

**9m X 9m (81SQM)/
29,5ft x 29,5ft (870,25ft²)**



+44 7551 398823



info@mobileunit.eu



www.mobileunit.eu

"ASDA CAFE"

8m X 6m (48SQM)/26ft x 20ft (520ft²)



+44 7551 398823



info@mobileunit.eu



www.mobileunit.eu

"SWIFTCAB"

**7M X 5M (35SQM)/
23ft x 16ft (368ft²)**



+44 7551 398823



info@mobileunit.eu



www.mobileunit.eu

EXPLORE OUR WIDE RANGE OF PORTABLE CABINS AVAILABLE
FOR SALE TO ENHANCE YOUR BUSINESS

**8m X 6m (48SQM)/
26ft x 20ft (520ft²)**



“FLEXPORT”



+44 7551 398823



info@mobileunit.eu



www.mobileunit.eu

EXPLORE OUR WIDE RANGE OF PORTABLE CABINS AVAILABLE
FOR SALE TO ENHANCE YOUR BUSINESS

**9m X 6m (54SQM)/
29,5ft x 20ft (590ft2)**



“SIMON”



+44 7551 398823



info@mobileunit.eu



www.mobileunit.eu



“CARGODESK”

**7M X 5M (35SQM)/
23ft x 16ft (368ft²)**



+44 7551 398823



info@mobileunit.eu



www.mobileunit.eu

**6M X 5M (30SQM)/
20ft x 16ft (320ft2)**

“MARGARET”



+44 7551 398823

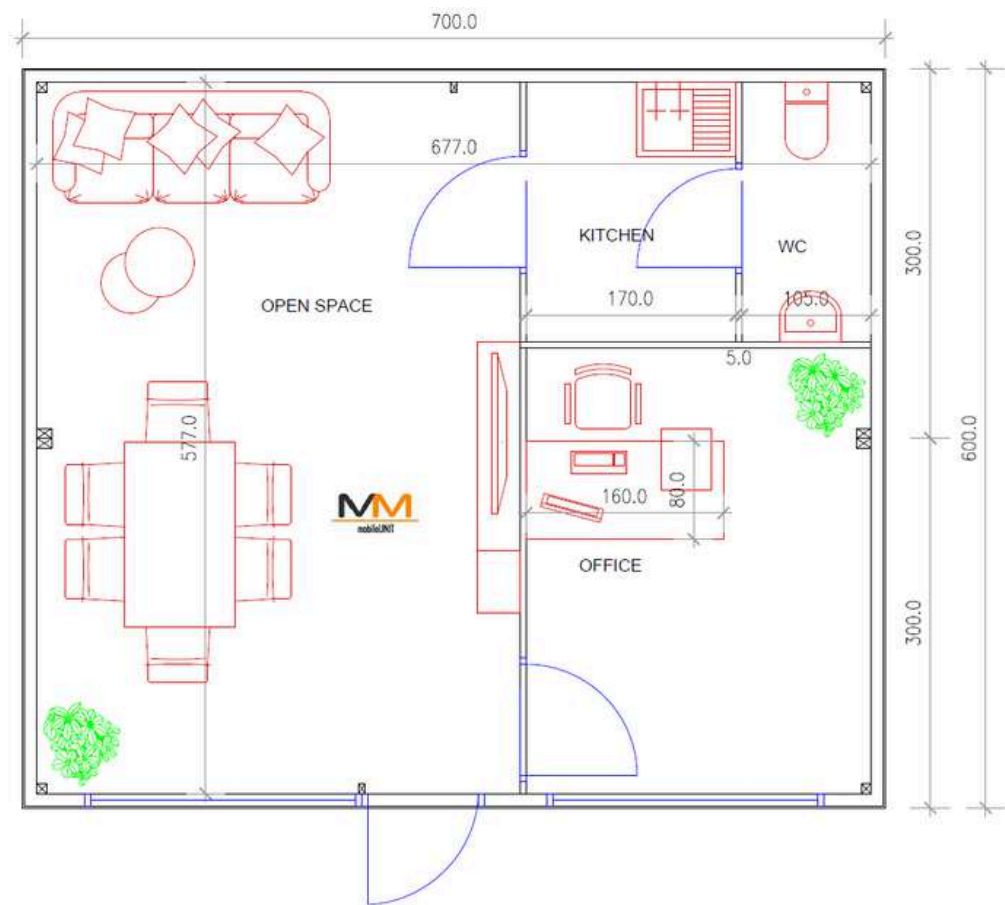


info@mobileunit.eu

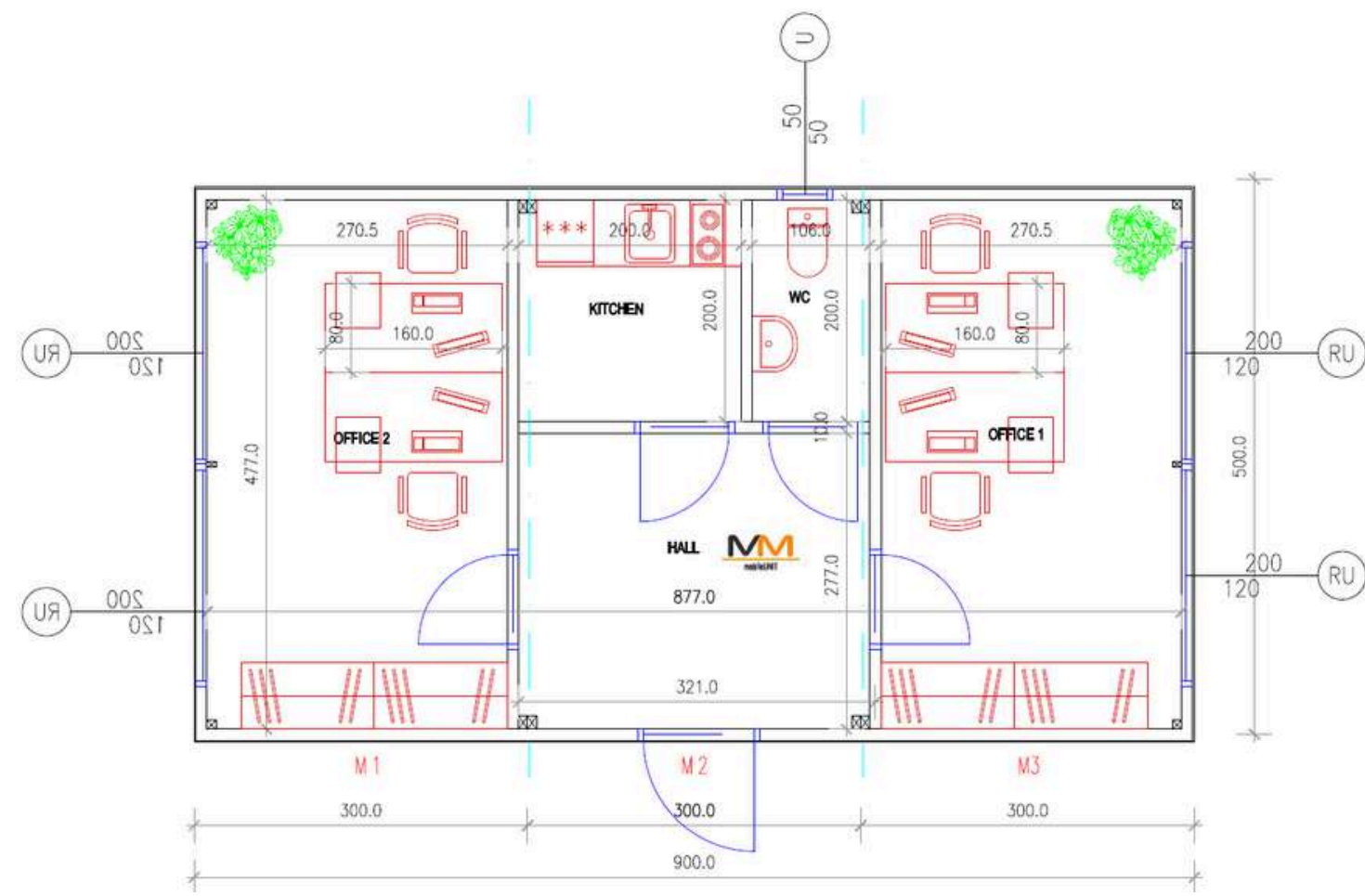


www.mobileunit.eu

FLOOR PLANS

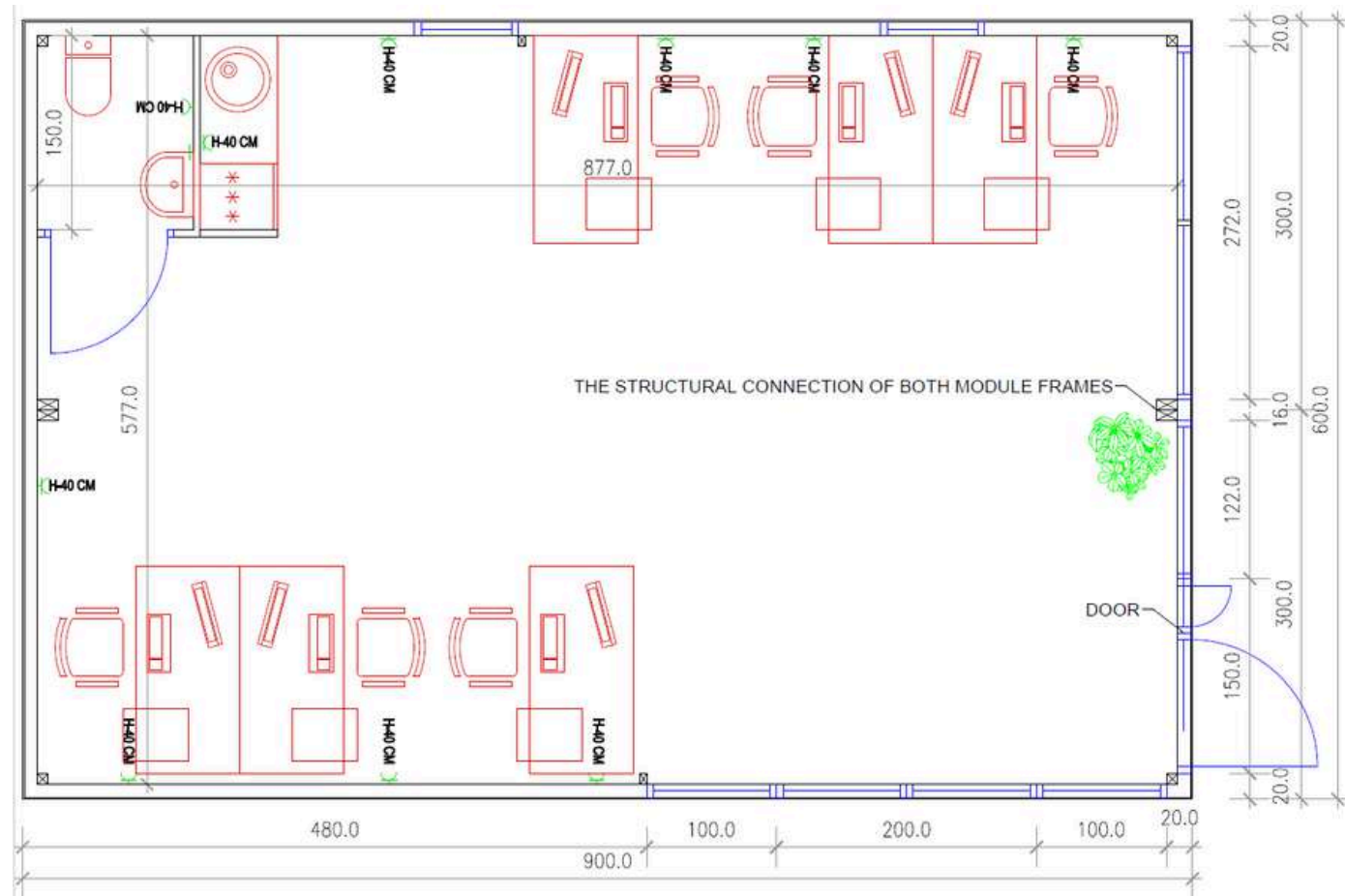


01
II Bay MODULAR BUILDING



02
II Bay MODULAR BUILDING

FLOOR PLANS



03

III Bay MODULAR BUILDING

Contact us!

+44 7551 398823

info@mobileunit.eu

www.mobileunit.eu

Scan the code and find us!



Acess RD, Common Ln, Retford, DN22 8LW, UK