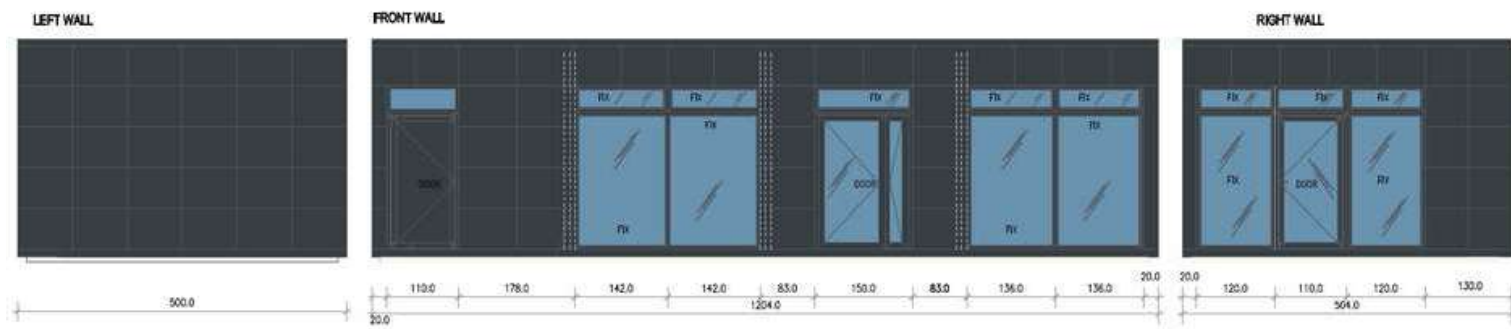


## PORTABLE OFFICE - CABIN - MODULAR BUILDING "JANET"

12,0m x 5,0m (60m<sup>2</sup>)/40ftx16 (640ft<sup>2</sup>)



## SPECIFICATION

### MEASUREMENTS

Dimensions:  
12,0mx5,0m (60m<sup>2</sup>)/40ftx16 (640ft<sup>2</sup>)  
Internal Height: 3m to 2,8m

### FRAME

Full steel frame system with four eye bolts on the roof, allowing easy movement from A to B.

### INTERNAL WALLS FINISH

Smooth white steel sheets with hygienic certification, easy to clean

### WALLS & ROOF

Made from fully insulated sandwich panels with a polyurethane core.

### FLOORING

- Robust construction frame
- Sandwich panel with chipboard
- Commercial lino finish in Earl Grey color

### EXTERNAL CLADDING OPTIONS:

Steel coffers in a specific color .

### DOOR

Aluminum single or double door in graphite with III glazed glass.

### WINDOWS

PVC windows with double-glazed glass; dimensions as per the drawing.



#### QUALITY

Quality guarantee at every stage of execution.



#### EXPERIENCE

10 years of market presence.



#### MOBILITY

Fast and tailored service to meet customer needs.



#### DEVELOPMENT

Continual pursuit of providing the best solutions.

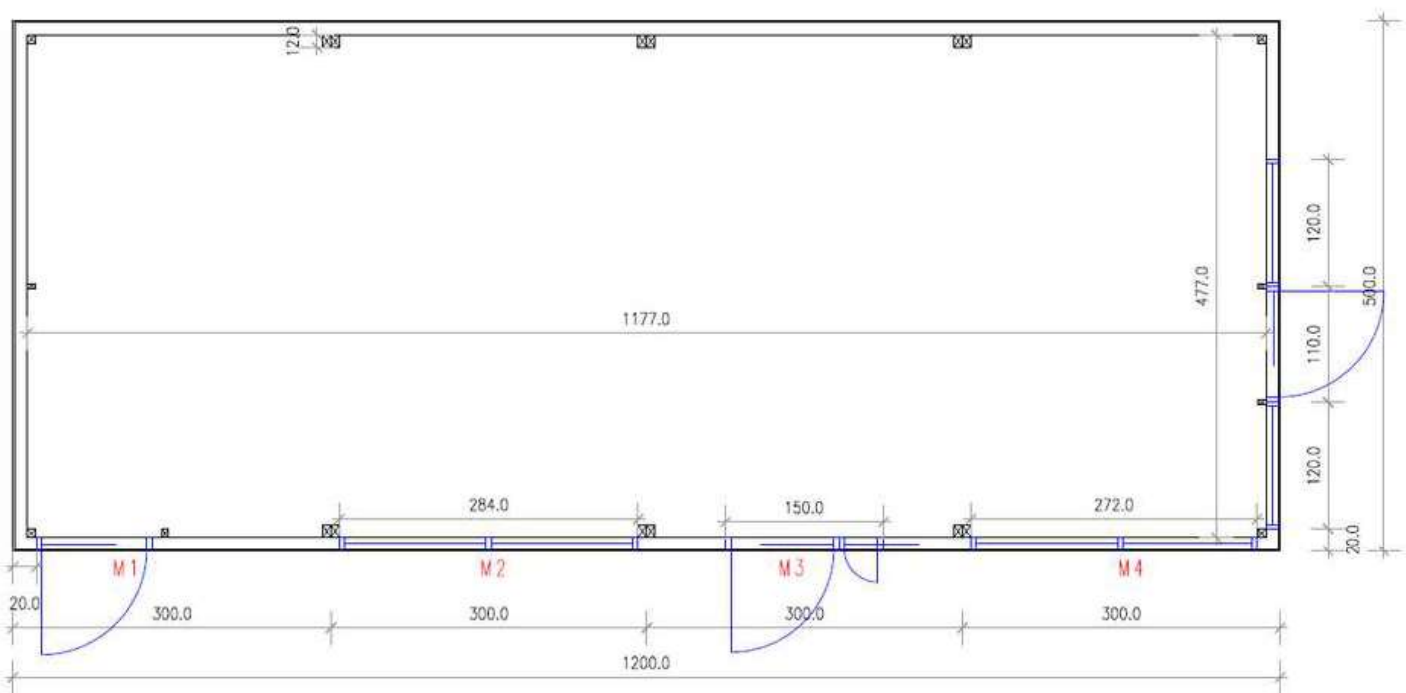
+44 7551 398823

info@mobileunit.eu

www.mobileunit.eu



**PayPal**



@MobileUnit



@mobileunitltd



+44 7551 398823



info@mobileunit.eu



www.mobileunit.eu

## ADDITIONALS



PARTY WALLS  
& DOORS



BATHROOMS



ELECTRICAL  
INSTALLATIONS



WATER AND  
SEWAGE  
INSTALLATIONS



KITCHENETTE



HPL CABINS



RADIATOR



AIR CONDITIONER

## OUR CLIENTS



### QUALITY

Quality guarantee  
at every stage of execution.



### EXPERIENCE

10 years of market presence.



### MOBILITY

Fast and tailored service to meet  
customer needs.



### DEVELOPMENT

Continual pursuit of providing the best  
solutions.



@MobileUnit



@mobileunitltd



+44 7551 398823



info@mobileunit.eu



www.mobileunit.eu